

# ARCHITECTURA RECTANGULAR SHOWER TRAY RECTANGLE

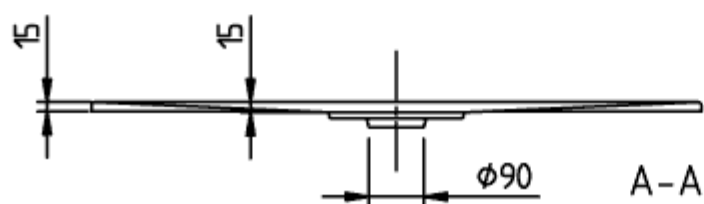
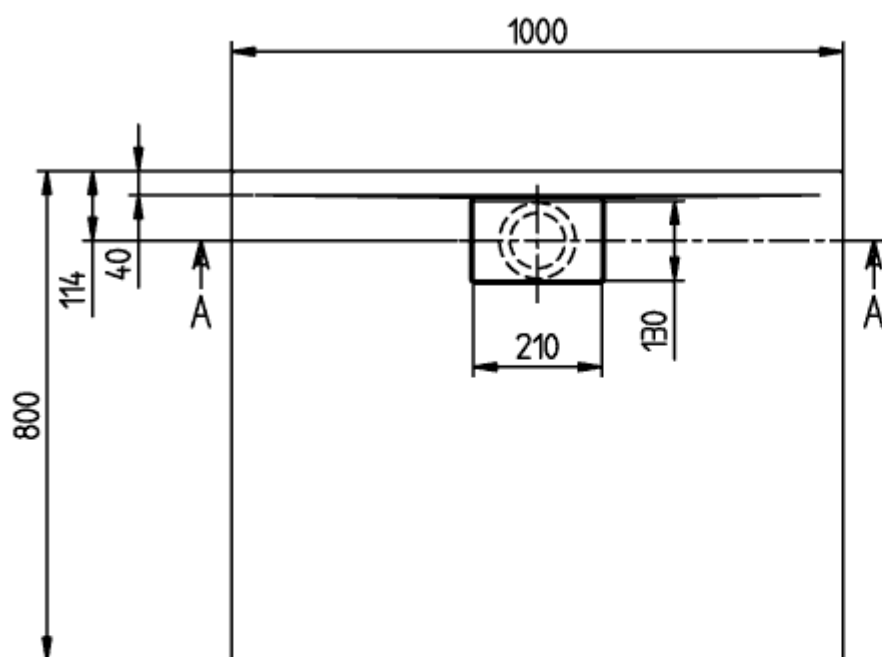
## PRODUCT INFORMATION



Article title	Villeroy & Boch Architectura Rectangular shower tray, 1000 x 800 x 15 mm, anthracite
Article number	UDA1080ARA215V-1S
Assembly / Assembly type	Surface-mounted, Corner installation[flush-fitting installation] Installation on a base
Assembly instructions	With MetalRim and an edge height of 15mm, we recommend the use of a composite seal in accordance with ETAG 022 on the floor structure below the shower tray in order to prevent any moisture from penetrating the floor structure., The installation height of the shower tray can be reduced by 30 mm if the Viega outlet fitting art. no. 634 100 is used. Please note: this outlet fitting does not conform to EN 274.
Scope of delivery	1 x rectangular shower tray , 1 x outlet cover in White Alpine (01), for matt colours, outlet cover in matching matt colours.
Length in mm	1000
Width in mm	800
Height in mm	15
Interior depth	15
Collection	Architectura
Material	Acrylic
Colour name	anthracite
Other material	Outlet cover: Acrylic
Other surfaces	Outlet cover: matt
Shape	Rectangle
Colour designation	anthracite
Other colour designations	Outlet cover: anthracite
Antibacterial surface (with AntiBac)	No
Easy surface cleaning (CeramicPlus)	No
With slip resistance	No

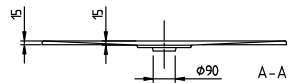
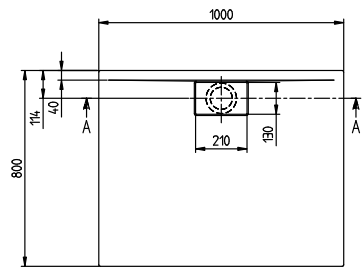
# TECHNICAL DRAWINGS


UDA1080ARA215V-1S



<p>ARCHITECTURA METAL RIM 1000x800 UDA1080ARA215</p>	<p><u>Vi</u></p>
<p>V02 / 31-03-2021</p>	

UDA1080ARA215V-1S



ARCHITECTURA METAL	 Villeroy & Boch 1748
RIM 1000x800	
UDA1080ARA215	
V02 / 31-03-2021	